



LED Followspot 300W

User Manual



Order code: LCG-FS300L

WARNING

FOR YOUR OWN SAFETY, PLEASE READ THIS USER MANUAL CAREFULLY BEFORE YOUR INITIAL START-UP!

- Before your initial start-up, please make sure that there is no damage caused during transportation.
- Should there be any damage, consult your dealer and do not use the equipment.
- To maintain the equipment in good working condition and to ensure safe operation, it is necessary for the user to follow the safety instructions and warning notes written in this manual.
- Please note that damages caused by user modifications to this equipment are not subject to warranty.



IMPORTANT:

The manufacturer will not accept liability for any resulting damages caused by the non-observance of this manual or any unauthorised modification to the equipment.

- Never let the power cable come into contact with other cables. Handle the power cable and all mains voltage connections with particular caution!
- Never remove warning or informative labels from the unit.
- Do not open the equipment and do not modify the unit.
- Do not connect this equipment to a dimmer pack.
- Do not switch the equipment on and off in short intervals, as this will reduce the system's life.
- Only use the equipment indoors.
- Do not expose to flammable sources, liquids or gases.
- Always disconnect the power from the mains when equipment is not in use or before cleaning! Only handle the power-cable by the plug. Never pull out the plug by pulling the power-cable.
- Make sure that the available mains supply voltage is between 100~240V AC, 50/60Hz.
- Make sure that the power cable is never crimped or damaged. Check the equipment and the power cable periodically.
- If the equipment is dropped or damaged, disconnect the mains power supply immediately and have a qualified engineer inspect the equipment before operating again.
- If the equipment has been exposed to drastic temperature fluctuation (e.g. after transportation), do not connect power or switch it on immediately. The arising condensation might damage the equipment. Leave the equipment switched off until it has reached room temperature.
- If your product fails to function correctly, stop use immediately. Pack the unit securely (preferably in the original packing material), and return it to your Pro Light dealer for service.
- Only use fuses of same type and rating.
- Repairs, servicing and power connection must only be carried out by a qualified technician. THIS UNIT CONTAINS NO USER SERVICEABLE PARTS.
- This lighting fixture is for professional use only - it is not designed for or suitable for household use. The product must be installed by a qualified technician in accordance with local territory regulations. The safety of the installation is the responsibility of the installer. The fixture presents risks of severe injury or death due to fire hazards, electric shock and falls.
- Warning! Risk Group 2 LED product according to EN 62471. Do not view the light output with optical instruments or any device that may concentrate the beam.
- WARRANTY: One year from date of purchase.

OPERATING DETERMINATIONS

If this equipment is operated in any other way, than those described in this manual, the product may suffer damage and the warranty becomes void. Incorrect operation may lead to danger e.g: short-circuit, burns and electric shocks etc.

Do not endanger your own safety and the safety of others!

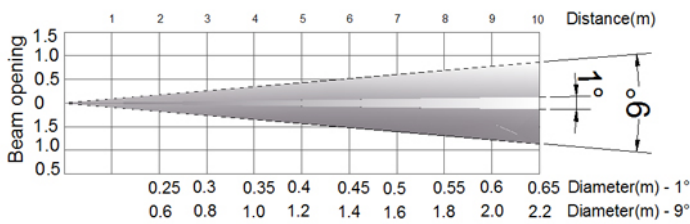
Incorrect installation or use can cause serious damage to people and/or property.

Product overview & technical specifications

LED Followspot

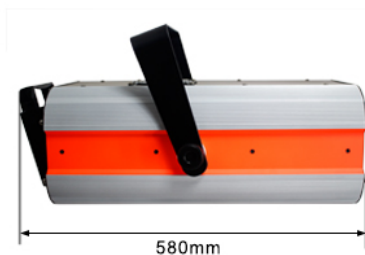
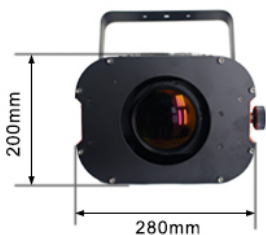
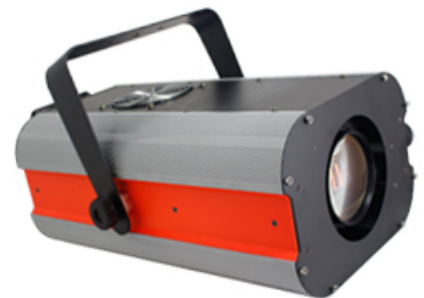
The Followspot features 5 dichroic colors plus open cold white, 7500K, 4600K, 3200K warm white filter, an electronic shutter for instantaneous black out, a 1°-9° beam angle, manual focusing, manual iris and rear positioning handle. On board DMX control also gives the user the flexibility to control the dimmer, shutter and color wheel from a DMX lighting console.

- 1 x 300W cool white LED
- Adjustable beam angle: 1° - 9°
- Manual focus & zoom
- Electronic blackout
- Manual & Electronic iris (0-100°)
- Color wheel: 5 dichroics colors, red, yellow, blue, green, orange + open
- CTO Wheel: 7500K, 4600K, 3200K, Atomization
- DMX channels: 4
- 0-100% dimming
- Rear positioning handle
- PowerCON input
- 3-Pin XLR input/output
- Fan cooled



Distance(m)	2	3	4	5	6	7	8	5600K
Max angle	155200	68800	38672	24768	17280	12640	9680	
Mix angle	123200	54880	30752	19680	13760	10048	7680	

Specifications	
Power consumption	400W
Power supply	100~240V, 50/60Hz
Fuse	F2A 250V
Dimensions	270 x 280 x 585mm
Weight	6.4kg
Order code	LCG-FS300L



Functions:

Dimmer: Push the slide up to increase the intensity, and Push the slide down to decrease the intensity.

CTO: Push the slide up to 4600K, 3200K, FROST and Push the slide down to decrease the Color temperature.

IRIS: Push the slide up to Zoom out, and Push the slide down to Zoo in.

Color buttons: Allows the user to choose between 5 colours plus white.

Focus: Manual button

Zoom: Manual button

DMX mode:

Operating in a DMX control mode environment gives the user the greatest flexibility when it comes to customising or creating a show. In this mode you will be able to control each individual trait of the fixture and each fixture independently.

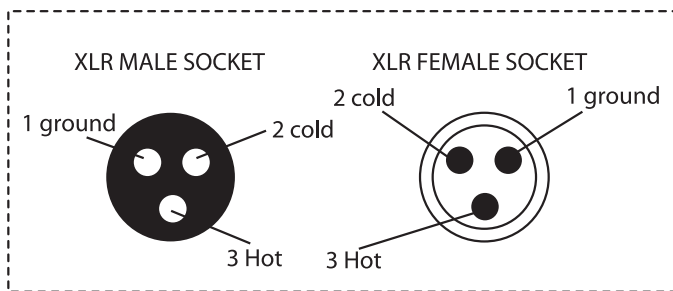
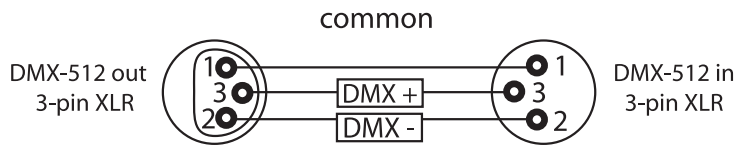
Channel	Value	Function		Channel	Value	Function
1	000-049	Open (cool white)		3	000-255	Iris
	050-099	Yellow		4	000-255	Dimmer
	100-149	Orange				
	150-199	Green				
	200-249	Blue				
	250-255	Red				
2	000-069	7500K				
	070-139	4600K				
	140-209	3200K				
	210-255	Frost				

Manual mode:

To access the manual mode, remove the DMX cable on the rear of the unit. The unit is now in manual mode. Now use the colour buttons along with the dimming, Iris and CTO knob to control the unit.

Notice:

Be sure to follow the diagrams below when making your own cables. Do not connect the cables shield conductor to the ground lug or allow the shield conductor to come in contact with the XLRs outer casing. Grounding the shield could cause a short circuit and erratic behaviour.



XLR Pin Configuration
Pin 1 = Ground
Pin 2 = Negative
Pin 3 = Positive

Special note:

Line termination:

When longer runs of cable are used, you may need to use a terminator on the last unit to avoid erratic behaviour.

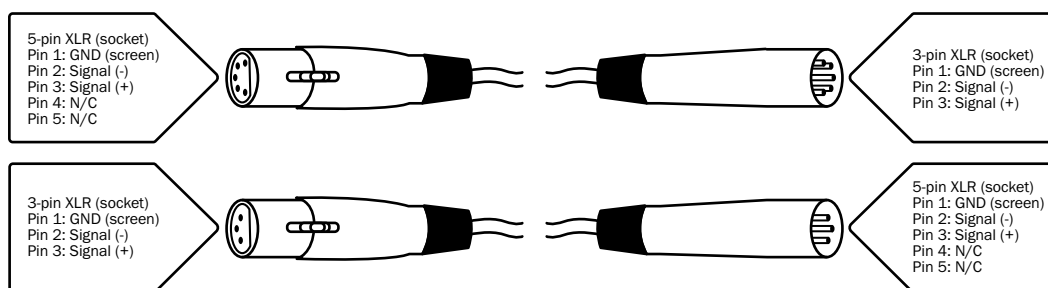
Using a cable terminator will decrease the possibilities of erratic behaviour.

(3-pin - Order ref: CABL90, 5-pin - Order ref: CABL89)

Termination reduces signal transmission problems and interference. It is always advisable to connect a DMX terminal, (resistance 120 Ohm 1/4 W) between pin 2 (DMX-) and pin 3 (DMX+) of the last fixture.

5-pin XLR DMX connectors:

Some manufactures use 5-pin XLR connectors for data transmission in place of 3-pin. 5-pin XLR fixtures may be implemented in a 3-pin XLR DMX line. When inserting standard 5-pin XLR connectors in to a 3-pin line a cable adaptor must be used. The diagram below details the correct cable conversion.





Correct Disposal of this Product (Waste Electrical & Electronic Equipment)

**(Applicable in the European Union and other European countries
with separate collection systems)**

This marking shown on the product or its literature, indicates that it should not be disposed of with other household wastes at the end of its working life. To prevent possible harm to the environment or human health from uncontrolled waste disposal, please separate this from other types of wastes and recycle it responsibly to promote the sustainable reuse of material resources.

Household users should contact either the retailer where they purchased this product, or their local government office, for details of where and how they can take this item for environmentally safe recycling.

Business users should contact their supplier and check the terms and conditions of the purchase contract. This product should not be mixed with other commercial wastes for disposal.

